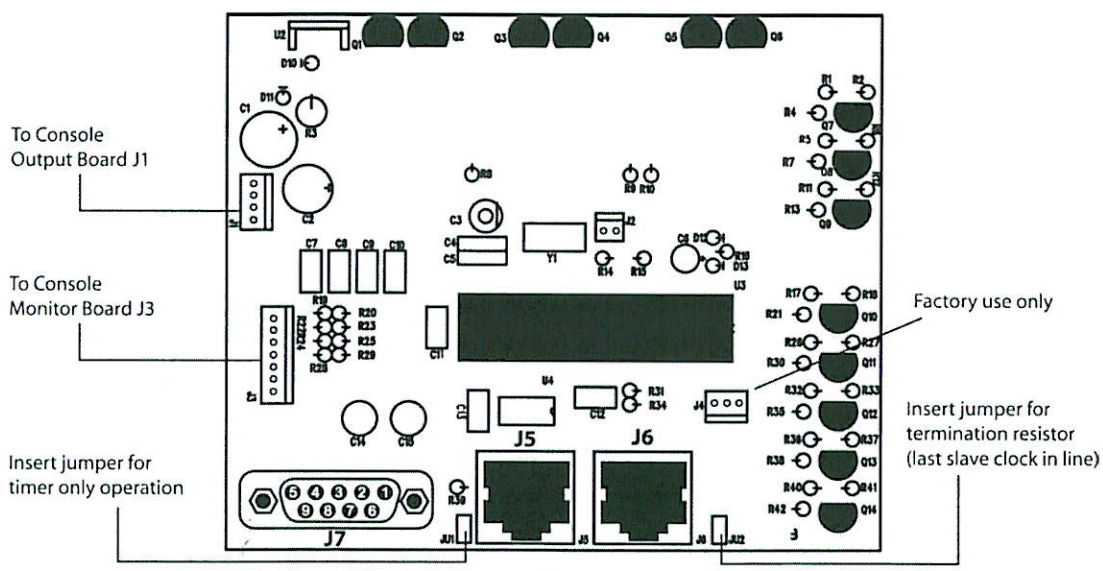


For Assy:
14401
Rev: 5/18/2006

Radio Systems Part# 14401 CT-2002 Console Clock/Timer



J7 (9 Pin D Female)		J5 Serial Loop-Thru Output (RJ-45)		J6 Serial Input (RJ-45)	
Pin 1	Serial Data Out +	Pin 1	Output +	Pin 1	n/c
Pin 2	Serial Data In +	Pin 2	Output -	Pin 2	n/c
Pin 3	Serial Data In -	Pin 3	Input +	Pin 3	Input +
Pin 4	Serial Data Out -	Pin 4	GND	Pin 4	GND
Pin 5	GND	Pin 5	TOH Input	Pin 5	TOH Input
Pin 6	TOH Reset	Pin 6	Input -	Pin 6	Input -
Pin 7	GND	Note: Use pins 1&2 if this clock is the master (first) in the serial chain (a crossover cable is recommended). Use pins 3&6 if looping thru sync provided externally via J6 (a straight-thru cable is recommended)			
Pin 8	N/C				
Pin 9	N/C				

General Operating Instructions

All units may operate as stand-alone or slave displays. Clock Set and Up Timer functions can be controlled by the front panel buttons or the infra-red remote control. However, the IR remote control is required for entering down times and internal setup functions.

Console Front Panel or Wired Remote Operations

Clock/Timer (Mode) Select

All CT-2002 units operate as both clocks and timers. Switch between modes by pressing the MODE button on the console front panel. The front panel LED will light to indicate the mode selected.

To Set the Clock:

1. Press the mode button to select the time-of-day display. The clock LED will illuminate.
 2. Press and hold the STOP and START buttons. The set LED will illuminate. The display will reset to 12:00:00.
 3. Press the STOP button to advance the hours. Press the RESET button to advance the minutes (note - seconds are not settable and remain at :00).
 4. Start the clock at the top of the minute by pressing the START button. The set LED will extinguish.
- Note:** If Serial Time of Day is supplied to the CT-2002 (slave mode), it will not be possible to enter the Clock Set Mode. Time-of-Day set can be done at the master unit. The displayed hours can be offset via the IR Remote Control.

To Use the Up Timer

1. Press the Mode Button to select the timer display. The timer LED will illuminate.
 2. Press the START button to start timing.
 3. Press the STOP button to stop timing.
 4. Press the RESET button to return the display to 00:00
- Note:** Press the Auto button to allow automatic reset and start of the timer when a console channel on button is depressed. (programming of JU15 for input A or JU17 for input B to allow this function on each channel is required.)

* S/N RS-14503 (11/2003) and later

Information Grid	
Manufactured Date:	2002-Present
Status:	Current
Application:	Millenium-A Console / Millenium-D Console
Notes:	



601 Heron Drive · Logan Township, NJ 08085
856/467-8000 · 856/467-3044 Fax · sales@radiosystems.com
www.radiosystems.com · www.studiohub.com