

Technical Bulletin
No: 104 – On Switch Default after Power Failure
via Start Switch

Problem: After a power failure, all RS Series Console Switches return to an “Off” state. This is particularly troublesome for operators utilizing a satellite/automation systems during un-attended console hours.

Solution: Add two components to each channel J3 that must return to the “On” state following a power failure.

These components are one 10uF, 25 volt capacitor and one 100K Ohm 5% resistor

Install these components (as drawn on the attached schematic) across pins 1&3 of J3 for each channel that must return to the “On” State

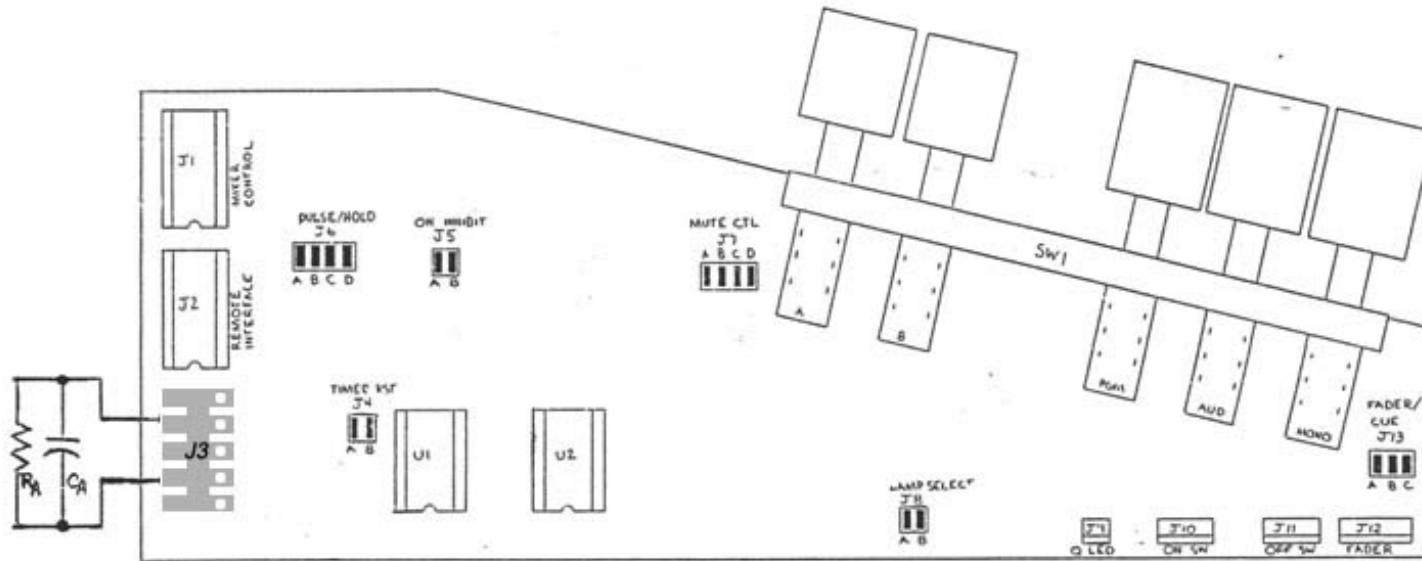


601 Heron Drive
Logan Township, NJ 08085
Phone: 856-467-8000 • Fax: 856-467-3044
<http://www.radiosystems.com>

Technical Bulletin

No: 104 – On Switch Default after Power Failure via Start Switch

Auto Start



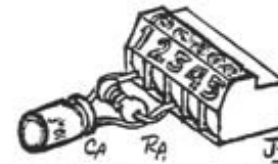
Auto Start Plug

Used to auto start any given channel upon power up

Parts: RA - 100k 1/4W Resistor - RS Part #5876

CA - 10uf Electrolytic N.P. - RS Part #1014

J3 - Connector 5 Pin Electrovert - RS Part #6074



This document and the information herein is provided exclusively for the use of Radio Systems' employees and clients. Reproduction, transfer, or use for any reason, in whole or in part, is expressly forbidden without the prior written authorization of Radio Systems, Inc.	RADIO SYSTEMS INC. Edgemont, Pa., U.S.A.		Title: INPUT CONTROL CARD	
	Product: R.S. SERIES CONSOLE		Type: CIRCUIT BOARD	
	Size:	Code:	Part #:	7089
	Scale:	Rev. #:	Sheet 1 of 1	



601 Heron Drive

Logan Township, NJ 08085

Phone: 856-467-8000 • Fax: 856-467-3044

<http://www.radiosystems.com>